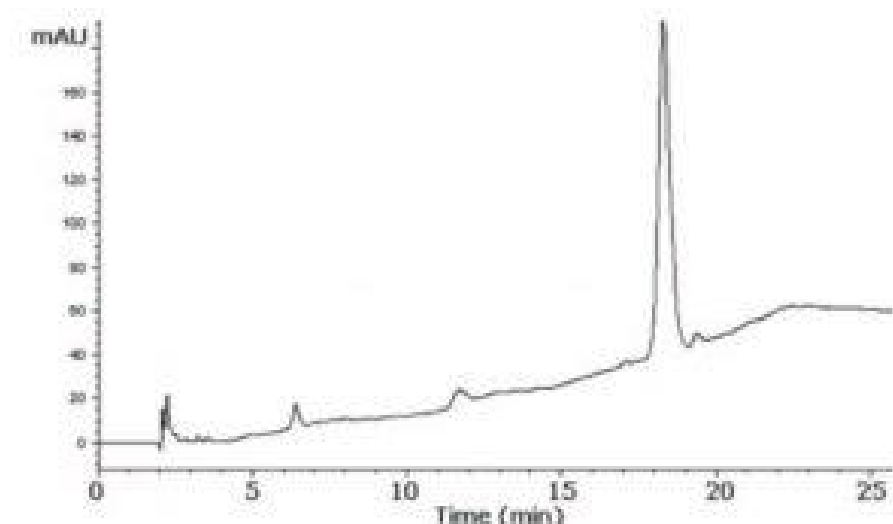


Monoclonal Anti-A1-Glycoprotein - AppNote

Glycoprotein Analysis

For the last few decades Glycoproteins have been a subject of interest to biochemists and biologists in many fields. These proteins are found in plasma and other biological fluids and they serve many functions in nearly every physiological process of living organisms.

These macromolecules consist of a peptide chain and one or more carbohydrates linked to them. The simple gradient Method used in this note for the analysis is very reproducible (%RSD about 1.5). The equilibration time between samples is very short and the symmetrical peak is easy to integrate.



Method Conditions

Column: Cogent Bidentate C8 300™, 5µm, 300Å

Catalog No.: 40008-75P-3M

Dimensions: 4.6 x 75mm

Mobile Phase:

A: DI Water / 0.1% Trifluoroacetic Acid

B: Acetonitrile / 0.1% Trifluoroacetic Acid

Gradient:

Time (minutes)	%B
0	15
20	50
25	50
25.1	15

Post Time: 5 minutes

Injection vol.: 1µL

Flow rate: 0.5mL / minutes

Detection: UV @ 214nm

Sample Preparation: Monoclonal Anti-A1-Glycoprotein, Mouse 043H4848 in 0.05 % (w/v) in DI Water

Notes: *This Glycoprotein is associated with inflammatory response and its related conditions such as Rheumatoid Arthritis.*



Attachment

No 94 Monoclonal anti-a1-glycoprotein pdf 0.1 Mb [Download File](#)

Printed from the Chrom Resource Center

Copyright 2025, All Rights Apply

MicroSolv Technology Corporation

9158 Industrial Blvd. NE, Leland, NC 28451

Tel: (732) 380-8900

Fax: (910) 769-9435

Email: customers@mtc-usa.com

Website: www.mtc-usa.com